

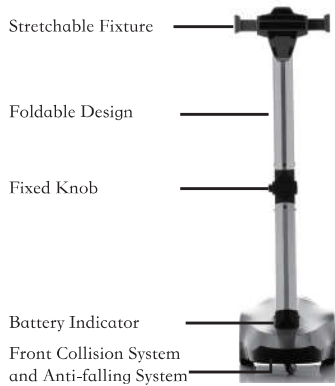


PADBOT

User Guide

PadBot U2

1 Overview



PadBot U2



PadBot U2

Robot Height	976 mm
Robot Width	266 mm
Robot Depth	372 mm
Robot Weight	6 Kg
Battery Capacity	5000 mAh
Charging Input	12.6V/1.5A
Charging Interface	5.5*2.1
Charge Time	6 Hours
Keep-running Time	10 Hours
Standby Time	40 Hours

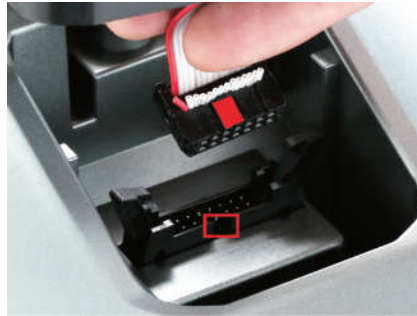
PS: You can charge your tablet which on fixture with PadBot USB charger and your cable.

List of accessories



2 Assemble

1. Combine the machine base and the body with connection port. Please pay attention to the way you combine it, the protuberant point and the connection gap should be in the same direction.



2. Using the hexagonal screwdriver for M6 screw, cover it with the black plastic cap.



3 Battery Charging

1st way: Plug the power cable into the DC charge of the robot and then plug the power adapter into the electrical outlet.



2st way: Plug the power cable into the DC charge of the charging base and then plug the power adapter into the electrical outlet. After setting robot self charging, the robot will find the charging base automatically. After charging, robot will leave charging base automatically.



4 Getting started

1 Requiring a tablet

- An iPad or an Android tablet, which is 8 inch to 10 inch.
 - 1) Models of iPad:
the new iPad/iPad 4/ iPad air/iPad air 2
iPad mini/iPad mini 2/iPad mini 3
 - 2) System requirement for iPad:
The device connecting the robot needs to support iOS6.0 version and the device need support Bluetooth 4.0 BLE .
 - 3) System requirement for Android tablet:
The device connecting the robot needs to support Android 4.3 version and the device need support Bluetooth 4.0 BLE .
- How to install the tablet:
When you press the button in the back of the fixture, the fixture will stretch. You can put the tablet into the fixture. The tablet will be as the head of PadBot.

NOTE: The list of unsupported devices: iPad 2; Nexus 10; Nexus 7.

2 WiFi or 4G Network

- WiFi network: it is recommended 8M bandwidth above.
- 4G Network

5 Using PadBot Apps (For example, we have one pad A and Phone B)

1. (Pad A and Phone B) Install PadBot Apps: Download the "PadBot" in Pad A and Phone B.



Plan to plug in robot

Plan to make video chat

iPad

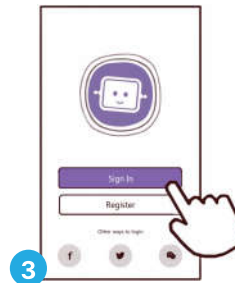
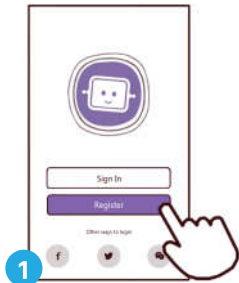
iPhone

Android Pad

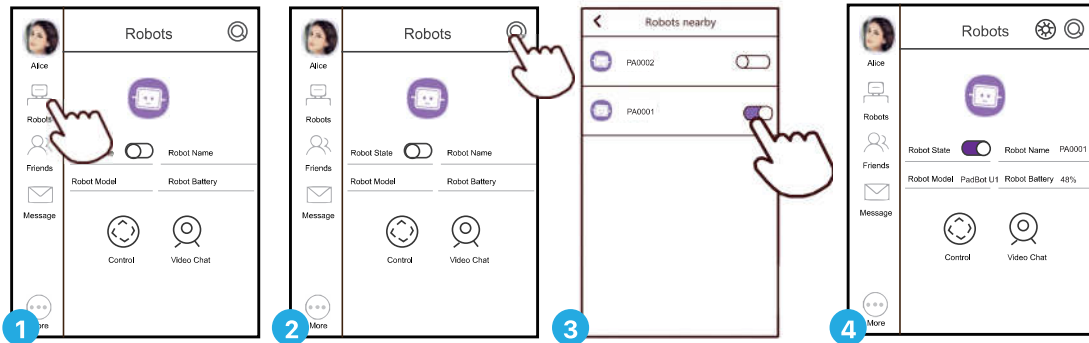
Android Phone

2. (Pad A and Phone B) Register account:

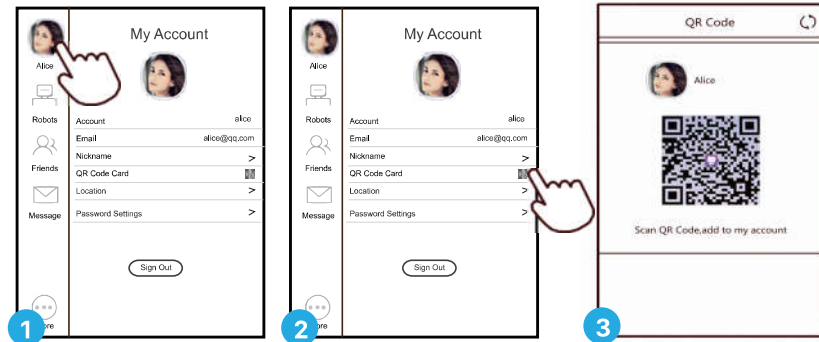
Open PadBot Apps, registered users enter the account and password, and login your account.



3. (Pad A) Connect robot: From the "Robots" menu, click the "Search" icon and connect the robot.



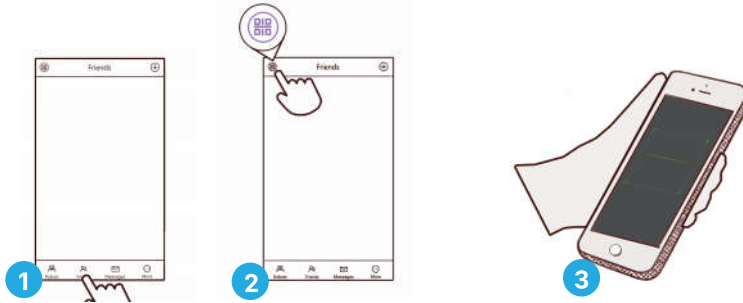
4. (Pad A) Open the QR Code: Click the avatar icon and click the "QR Code Card" to show the QR Code.



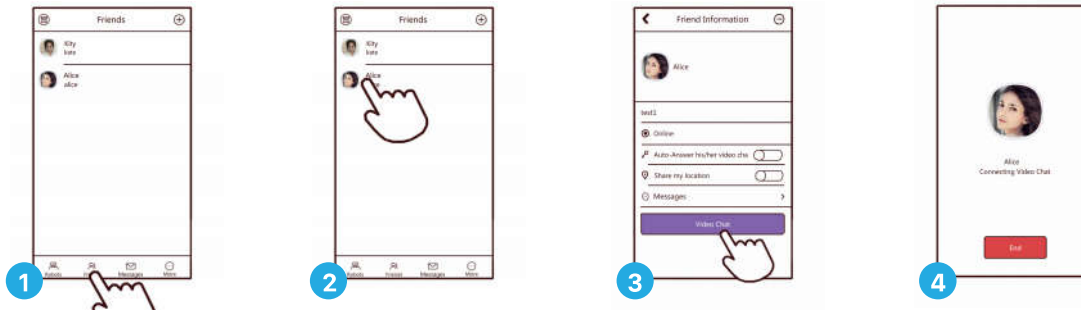
6 Video Chat

5. (Phone B) Add friend - Scanning QR Code:

From the "Friend" menu, click the "QR Code Scan" icon to scan the QR Code of Pad A.

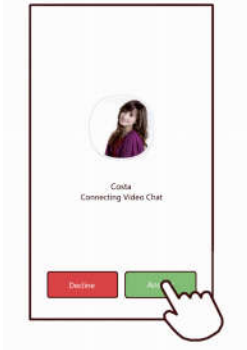


6. (Phone B) Building a video chat: From the "Friend" menu, you can click friend's avatar icon, and click the "Video Chat" button to build a video chat with your friend.



7 Control the Robot

7. (Pad A) You can accept or refuse the friend's video chat.



8. (Phone B) Control the robot: Control the robot to move forward, backward, turn left, turn right.



A Moving forward or backward



Initial position



Moving forward



Moving backward

B Turn left or turn right



Initial position



Turn right



Turn left

8 Technical Specifications

Height: 976mm

Width: 266mm

Depth: 372mm

Battery Capacity: 5000mAh

Rated Energy: 55.5Wh

Charging Input: 12.6V/1.5A

Charge Time: 6 Hours

Extreme Using Time: 8 Hours

Regular Using Time: 12 Hours

Standby Time: 40 Hours

9 Use and Handling

1. Do not place robot in humidity, dusty, smoggy or vapor environment.
2. Do not place robot in the water, and you can clean it with adamp cloth and mild detergent.
3. Do not disassemble the robot.
4. Do not throw or drop robot, and don't cause violent shaking or shock to robot.
5. Please note that use wrong type battery will cause an explosion risk, be sure to follow the instruction to dispose of used batteries.



Inbot Technology Ltd.

Address: Room 1221-1222, Huagang Commercial Building, no.140,
West Zhongshan Ave, Tianhe-District, Guangzhou, China

E-mail: padbot@inbot.cn

Website: www.padbot.com

Hotline: (+8620)3845-6676
